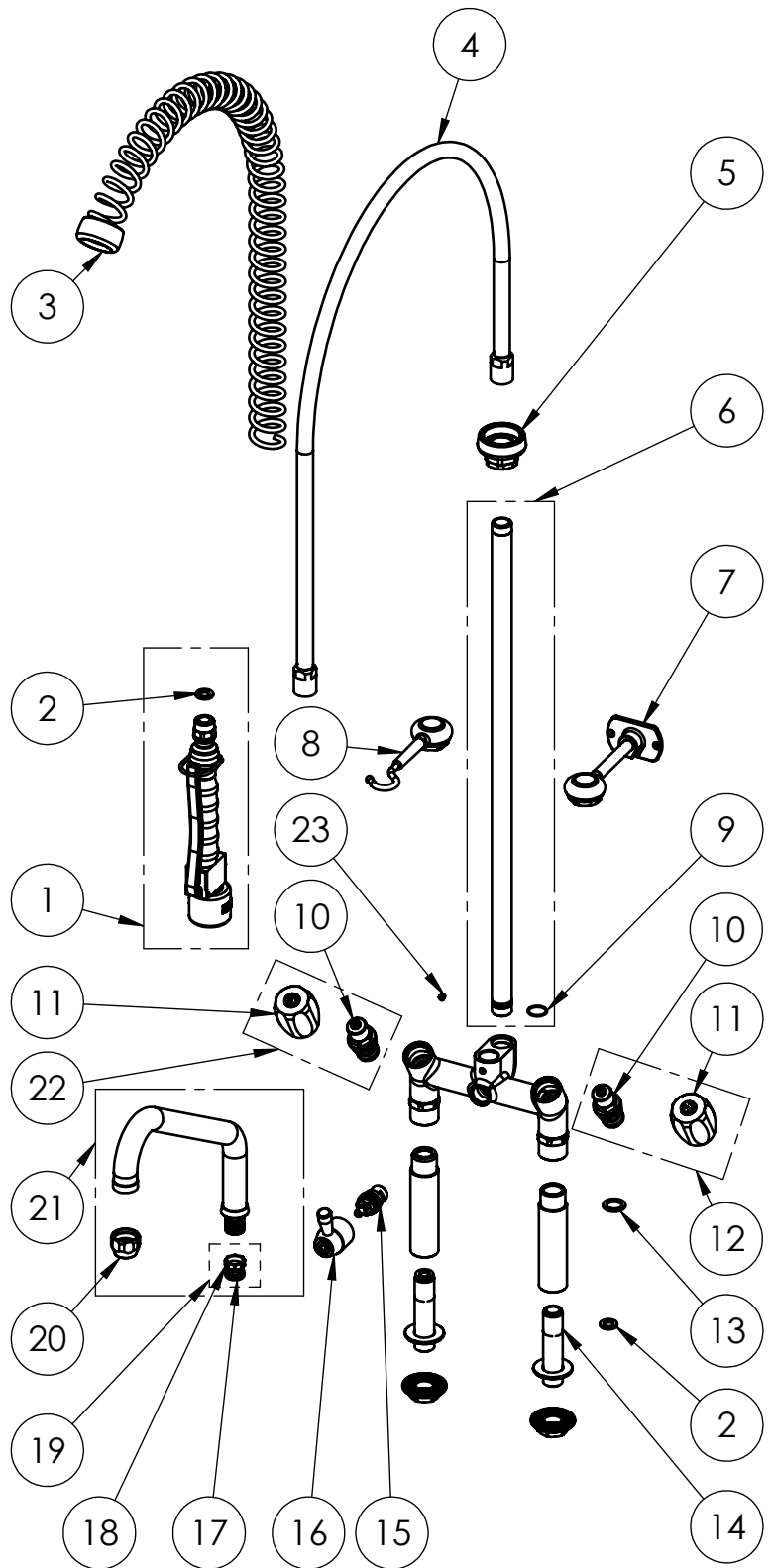


**Rough-In Requirement:  
23mm Mounting Hole**

TITLE / DESCRIZIONE	DRN / DIS	CHD / VER	APPR
Elevated double-hole (155mm center distance) slanted, mixing temperature, deck mount Pre-Rinse Unit with 120mm risers, 250mm swivel nozzle (Ø 25mm), switch for spray valve/ nozzle. 80mm-long mounting shanks, G1/2" male inlets with check valves, G3/4" high flow compression headworks, riser tube - stainless steel, brass, chrome plated. 4L/min KLARCO "NEW low-flow" spray valve.	SCALE / SCALA 1:10	DATE / DATA 09/07/2019	SHEET / PAG 1 of 2(2)
This drawing contains proprietary information which is the property of KLARCO S.R.L. without whose written permission it may not be copied, shown or handed to a third party or otherwise used	Questo disegno contiene informazioni di proprietà di KLARCO S.R.L. e senza la sua autorizzazione scritta non può essere copiato, mostrato o ceduto a terzi o in qualsiasi altro modo usato	NUMBER / CODICE DIS. MODEL / PRODOTTO <b>2E.3050.4L.11.C14</b>	A4V

ITEM NO.	SALES NO.	DESCRIPTION
1	P591	SPRAY VALVE "NEW LOW-FLOW" BLACK
2	P074	FLAT GASKET 1/2" Ø18,5x11 sp.2mm
3	P005	OVERHEAD SPRING
4	P003	120cm Ø17 F1/2"xF1/2" FLEXIBLE HOSE
5	P007	SPRING CHROMED SUPPORT
6	P001	650mm G1/2" RIZER W.O-RING
7	P034	115mm WALL BRACKET CHROMED
8	P035	SPRAY VALVE CHROMED SUPPORT
9	P388	O-RING 18x1,5 EPDM 70sh.
10	V010	3/4" HEADWORK
11	H001/color	"EUROP" HANDLE W. COLOR CODED INDEX (specify the color B or R)
12	V011/B	COMPLETE HANDLE W.BLUE CODED INDEX + HEADWORK KIT
13	P107	FLAT GASKET 3/4" Ø24x17sp.2mm
14	P031	BACKFLOW PREVENTER DW20-DN15
15	V040/D	1/2" CERAMIC HEADWORK (RH)
16	H021	DIVERTER KNOB
17	P072	O-Ring 119 (Ø 15,08 x 2,62mm) EPDM 70
18	P592	SWIVEL SLEEVE
19	P613	#2 OR + #1 SWIVEL SLEEVE KIT FOR FAUCET/OUTLET
20	P014	STREAM REGULATOR OUTLET (Ø25 SPOUT)
21	C014	SWING NOZZLE Ø25x250 h.150
22	V011/R	COMCOMPLETE HANDLE W.RED CODED INDEX + HEADWORK KIT
23	P236	SPOUT SCREW (short)



TITLE / DESCRIZIONE  
Elevated double-hole (155mm center distance) slanted, mixing temperature, deck mount Pre-Rinse Unit with 120mm risers, 250mm swivel nozzle (Ø 25mm), switch for spray valve/ nozzle. 80mm-long mounting shanks, G1/2" male inlets with check valves, G3/4" high flow compression headworks, riser tube - stainless steel, brass, chrome plated. 4L/min KLARCO "NEW low-flow" spray valve.

This drawing contains proprietary information which is the property of KLARCO S.R.L. without whose written permission it may not be copied, shown or handed to a third party or otherwise used

Questo disegno contiene informazioni di proprietà di KLARCO S.R.L. e senza la sua autorizzazione scritta non può essere copiato, mostrato o ceduto a terzi o in qualsiasi altro modo usato

DRN / DIS	CHD / VER	APPR
SCALE / SCALA 1:8	DATE / DATA 09/07/2019	SHEET / PAG 2 of 2(2)
NUMBER / CODICE DIS.	MODEL / PRODOTTO	
	2E.3050.4L.11.C14	A4V